

# **Map and List of References for the Exhibition *In Practice* at the Royal College of Psychiatrists**

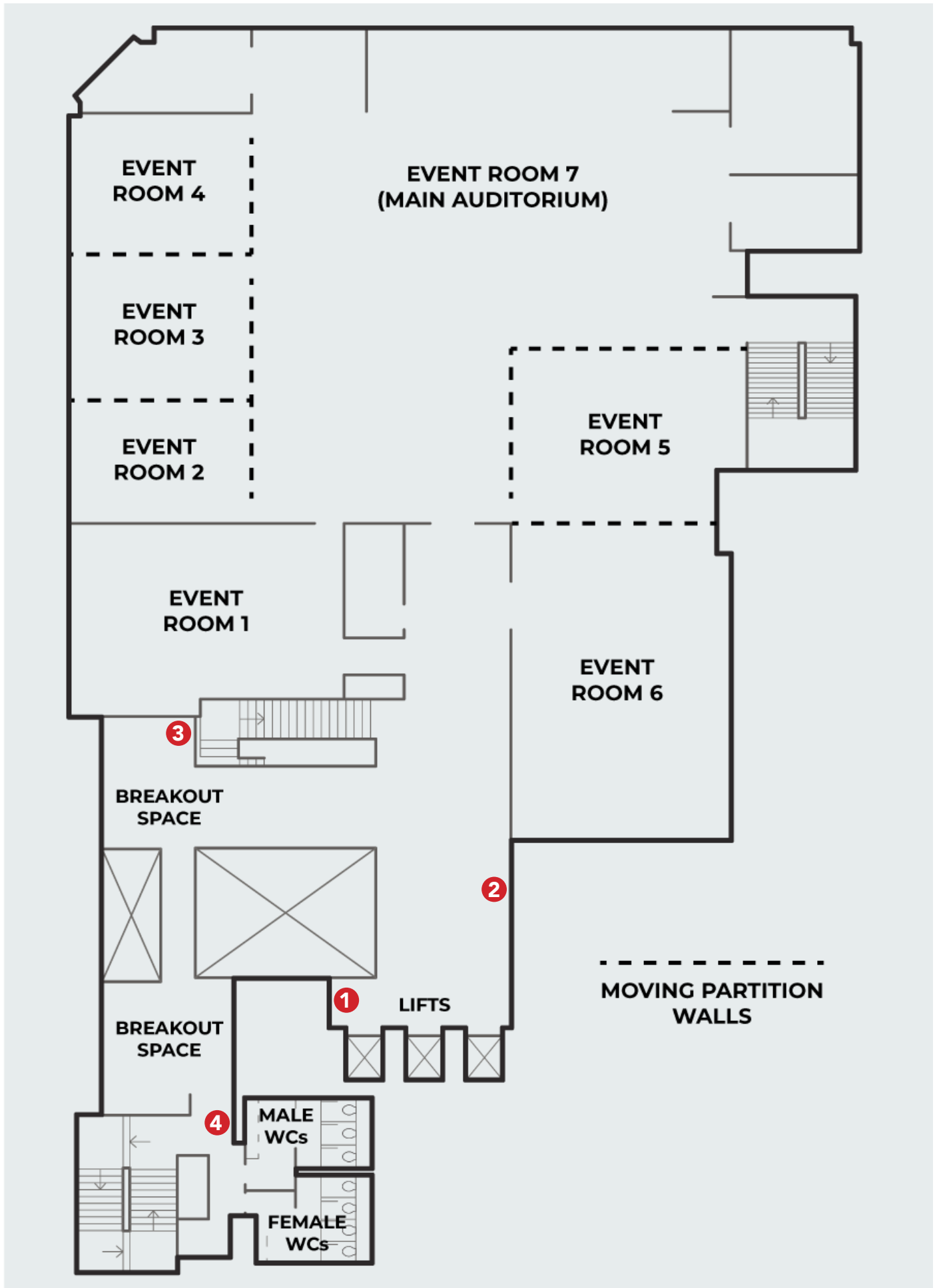
**by Adam Hines-Green**

The works are distributed across three floors of the College. Each work is numbered on the maps below from one to fourteen. There is also a list of references indicating the sources of the text in each work. The sources used are all from the College's antiquarian library or archive.

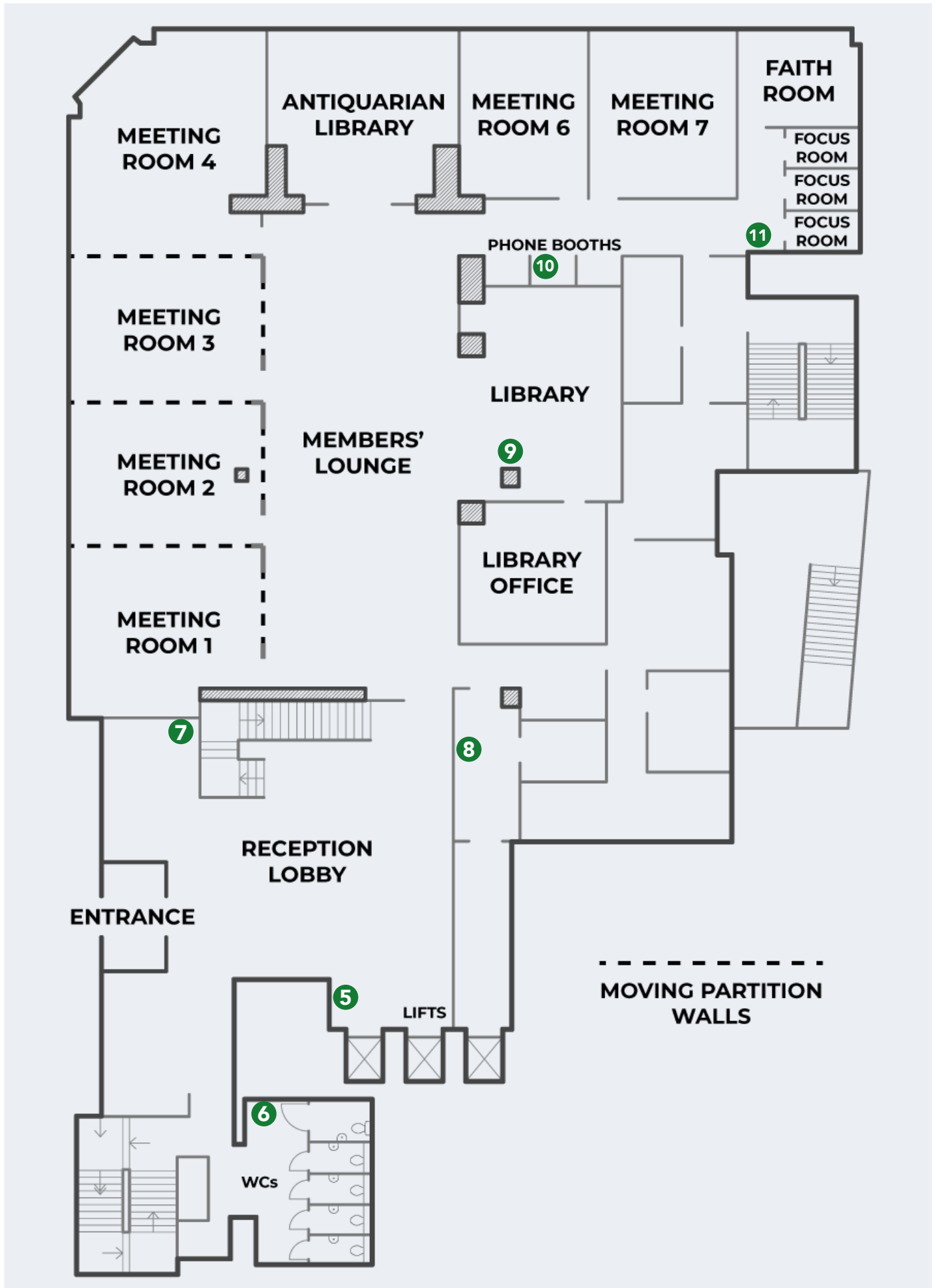
The works are made of pencil and carbon transfer on paper, behind museum glass, in limed and graphite-coated oak frames. The exhibition also includes one work on paper from the nineteenth century, which is framed in a similar manner. With the exception of this nineteenth-century work, each work also has an accompanying piece to its right, which is a printed document in a limed oak frame.

For further information or enquiries:  
[adamhinesgreen@gmail.com](mailto:adamhinesgreen@gmail.com)  
[adamhinesgreen.com](http://adamhinesgreen.com)

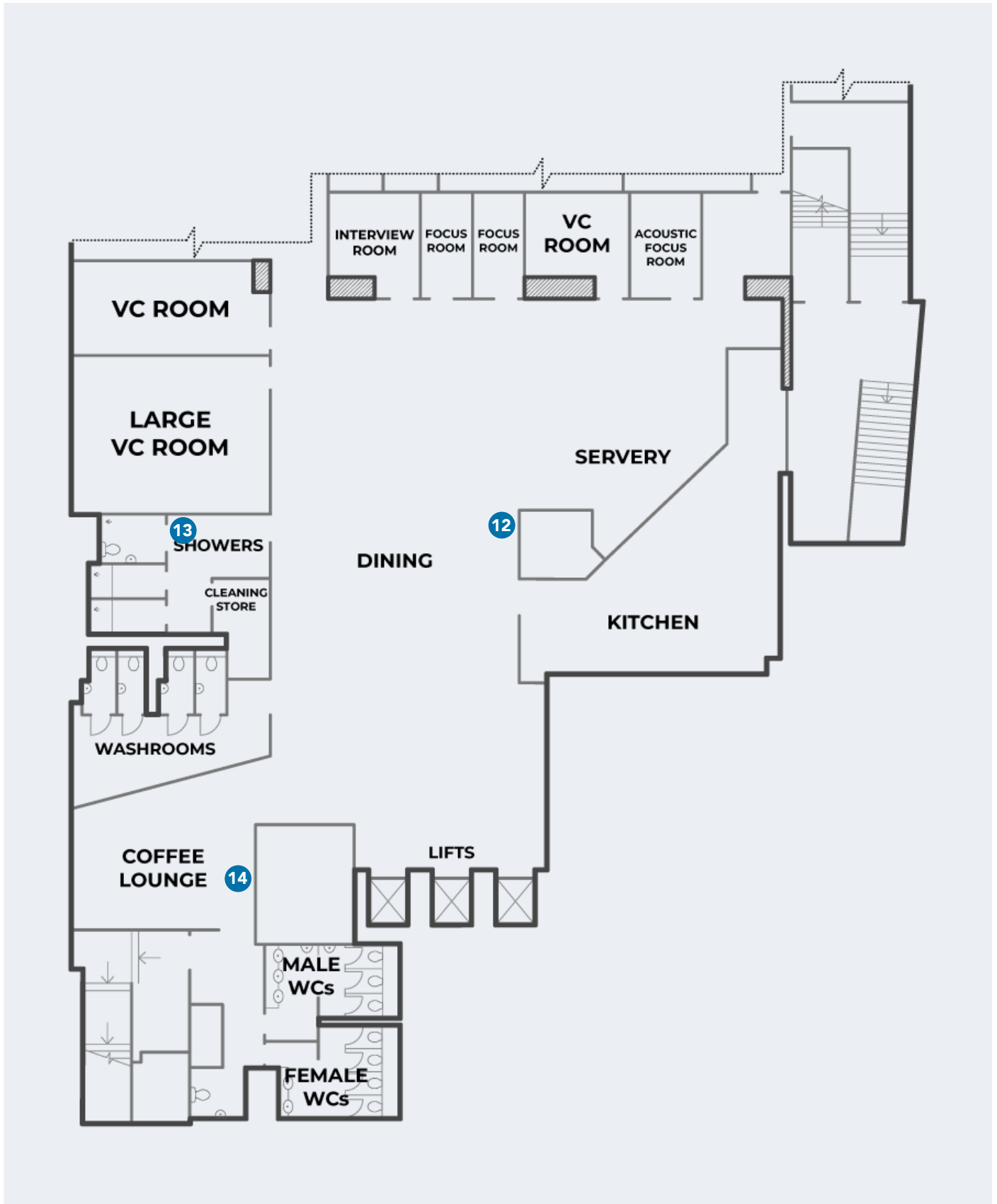
# First Floor



# Ground Floor



# Lower Ground Floor



# First Floor

The title of the work is listed first, followed by references listed from the top to the bottom piece of text in each work.

## 1 **'His Duty is to be Reasonably Skilful'**

### References:

Royal Medico-Psychological Association (RMPA), 'Responsibilities of Medical Officers in Mental Hospitals', 1938

John Connolly, *The Construction and Government of Lunatic Asylums and Hospitals for the Insane* (London: John Churchill, 1847), p.147

Montagu Lomax, *The Experiences of an Asylum Doctor* (London: George Allen & Unwin Ltd, 1921), p.252

Royal College of Psychiatrists, 'Memorandum of Evidence for the Committee of Inquiry into the Regulation of the Medical Profession', undated [c.1973], p.1

## 2 **'A Self-Imposed Discipline and Responsibility Dictated by the Professional Conscience'**

### References:

Royal College of Psychiatrists (RCPsych), 'Minutes of the Meeting of the Special Committee preparing evidence for the Committee of Inquiry into the Regulation of the Medical Profession', held at Chandos House, 30 April 1973

K. Rawnsley, 'The Responsibilities of Consultants in Psychiatry within the National Health Service', *Bulletin of the Royal College of Psychiatrists*, 8: 7 (July 1984)

K. Rawnsley, 'The Responsibilities of Consultants in Psychiatry within the National Health Service', *Bulletin of the Royal College of Psychiatrists*, 8: 7 (July 1984)

RCPsych, 'Committee of Enquiry Into Competence to Practise: Replies to Questionnaire', undated [c.1975/6]

RCPsych 'The Responsibilities of Consultant Psychiatrists', July 1996

## 3 **'No Brilliant Halo Can Ever Shine Round his Head'**

### References:

Caleb Crowther, *Observations on the Management of Madhouses* (London: Simpkin, Marshal, and Co., 1838), p.126

Royal College of Psychiatrists, 'Comments for submission to the David Owen Working Party', November 1974

Caleb Crowther, *Observations on the Management of Madhouses* (London: Simpkin, Marshal, and Co., 1838), p.66

Royal Medico-Psychological Association (RMPA), 'Memorandum on Care of Health and Hospital Staff', undated [RMPA existed 1926–1971]

## 4 **'Responsibility Rests with Management'**

### References:

Royal College of Psychiatrists, 'The Responsibilities of Consultant Psychiatrists', July 1996

Montagu Lomax, *The Experiences of an Asylum Doctor* (London: George Allen & Unwin Ltd, 1921), p.251

John Connolly, *The Construction and Government of Lunatic Asylums and Hospitals for the Insane* (London: John Churchill, 1847), p.138

Montagu Lomax, *The Experiences of an Asylum Doctor* (London: George Allen & Unwin Ltd, 1921), p.250

# Ground Floor

The title of the work is listed first, followed by references listed from the top to the bottom piece of text in each work.

## 5 **'Any Medical Practitioner is Bound to Use Reasonable Skill and Care'**

### References:

Royal College of Psychiatrists (RCPsych), 'The Responsibilities of Consultant Psychiatrists', July 1996

Royal Medico-Psychological Association (RMPA), 'Responsibilities of Medical Officers in Mental Hospitals', 1938

RMPA, 'Responsibilities of Medical Officers in Mental Hospitals', 1938

RCPsych, 'The Responsibilities of Consultant Psychiatrists', July 1996

Caleb Crowther, *Observations on the Management of Madhouses* (London: Simpkin, Marshal, and Co., 1838), p.126

RMPA, 'Responsibilities of Medical Officers in Mental Hospitals', 1938

RMPA, 'Responsibilities of Medical Officers in Mental Hospitals', 1938

## 6 **'Administrative Failures and Lack of Resources'**

### References:

Maximilian Jacobi, *On the Construction and Management of Hospitals for the Insane*, trans. by John Kitching (London: John Churchill, 1841), p.233

Royal College of Psychiatrists (RCPsych), 'Interim Report on the Conduct of Committees of Enquiry', 1976

Montagu Lomax, *The Experiences of an Asylum Doctor* (London: George Allen & Unwin Ltd, 1921), p.251

RCPsych, 'Interim Report on the Conduct of Committees of Enquiry', 1976

RCPsych, 'Notes on the Meeting of the Working Party on the Conduct of Committees of Inquiry', held at the Royal College of Psychiatrists, 17 Belgrave Square, London, on 9 June 1976

## 7 **'The College is Impressed and Depressed'**

### References:

Royal College of Psychiatrists (RCPsych), 'Interim Report on the Conduct of Committees of Enquiry', 1976

RCPsych, Dr JTL Birley, Chairman of the Special Committee on Unethical Psychiatric Practices (SCOUPP), 're: Freedom of Speech for NHS Staff – draft guidance from the Department of Health', 15 December 1992

RCPsych, 'Interim Report on the Conduct of Committees of Enquiry', 1976

RCPsych, 'Interim Report on the Conduct of Committees of Enquiry', 1976

RCPsych, Dr JTL Birley, Chairman of the Special Committee on Unethical Psychiatric Practices (SCOUPP), 're: Freedom of Speech for NHS Staff – draft guidance from the Department of Health', 15 December 1992

RCPsych, 'Comments for submission to the David Owen Working Party', November 1974

## 8 **Untitled theorem watercolour on paper by Phebe Pusey Phipps, probably c.1810–1820, Pennsylvania, USA. Framed and mounted by Adam Hines-Green in 2024.**

Theorem artworks were made by painting over stencils, which could be arranged to create more complex pieces. They could be produced by amateurs or children to create decorative artwork without requiring more formal training. Nonetheless, the makers had the ability to choose and arrange their stencils, and apply gradients of tone and colour, and so could enact a degree of individual creativity and skill within the given constraints of the process.

Theorems are rarely signed though this work is an exception. Phebe Pusey Phipps appears to have been one of nine children to Isaac Phipps and Margaret Passmore, born in 1797 in Doe Run, Chester, Pennsylvania, who died 27 August 1846 in Wilmington, New Castle County, Delaware.

## Ground Floor (continued)

The title of the work is listed first, followed by references listed from the top to the bottom piece of text in each work.

### 9 'The Physical and Moral Qualities of the Man'

#### References:

Caleb Crowther, *Observations on the Management of Madhouses* (London: Simpkin, Marshal, and Co., 1838), p.58

A Sane Patient [Herman Charles Merivale], *My Experiences in a Lunatic Asylum, by a Sane Patient* (London: Chatto and Windus, 1879), pp.22–23

Royal College of Psychiatrists, 'The Responsibilities of Consultant Psychiatrists', July 1996

D. R. MacCalman, 'Observations on the Teaching of the Principles of Mental Health to Medical Students', *British Journal of Medical Psychotherapy*, 26: 2 (July 1953), pp.140-151

### 10 'His Duties are Peculiar'

#### References:

Royal College of Psychiatrists, 'Comments for submission to the David Owen Working Party', November 1974

John Connolly, *The Construction and Government of Lunatic Asylums and Hospitals for the Insane* (London: John Churchill, 1847), p.143

A Sane Patient [Herman Charles Merivale], *My Experiences in a Lunatic Asylum, by a Sane Patient* (London: Chatto and Windus, 1879), pp.72–73

### 11 'Within this Framework of Governed Professionalism'

#### References:

Royal College of Psychiatrists (RCPsych), 'Comments on the Report of the Committee of Inquiry into the Regulation of the Medical Profession: Establishment of High Standards of Professional Conduct', undated [c.1975]

RCPsych, 'Memorandum of Evidence for the Committee of Inquiry into the Regulation of the Medical Profession', undated [c.1973], p.2

K. Rawnsley, 'The Responsibilities of Consultants in Psychiatry within the National Health Service', *Bulletin of the Royal College of Psychiatrists*, 8: 7 (July 1984)

RCPsych, 'Comments on the Report of the Committee of Inquiry into the Regulation of the Medical Profession: Establishment of High Standards of Professional Conduct', undated [c.1975]

# Lower Ground Floor

The title of the work is listed first, followed by references listed from the top to the bottom piece of text in each work.

## 12 **'The Asylum is His World. The Patients Are His Friends'**

### References:

A Sane Patient [Herman Charles Merivale], *My Experiences in a Lunatic Asylum, by a Sane Patient* (London: Chatto and Windus, 1879), p.113

John Connolly, *The Construction and Government of Lunatic Asylums and Hospitals for the Insane* (London: John Churchill, 1847), p.141

Unknown author, 'Memorandum on Undergraduate Teaching in Psychiatry', 1953

John Connolly, *The Construction and Government of Lunatic Asylums and Hospitals for the Insane* (London: John Churchill, 1847), p.144

## 13 **'In an Asylum, as in a Mill'**

### References:

Committee of Enquiry into Competence to Practise, 'Questionnaire to the Royal Colleges and Faculties', undated [c.1973–76]

Caleb Crowther, *Observations on the Management of Madhouses* (London: Simpkin, Marshal, and Co., 1838), p.61

D. R. MacCalman, 'Observations on the Teaching of the Principles of Mental Health to Medical Students', *British Journal of Medical Psychotherapy*, 26: 2 (July 1953), pp.140-151

Committee of Enquiry into Competence to Practise, 'Questionnaire to the Royal Colleges and Faculties', undated [c.1973–76]

## 14 **'Delegation of Authority, but no Abrogation of Responsibility'**

### References:

K. Rawnsley, 'The Responsibilities of Consultants in Psychiatry within the National Health Service', *Bulletin of the Royal College of Psychiatrists*, 8: 7 (July 1984)

Royal College of Psychiatrists (RCPsych), 'Notes on the Meeting of the Working Party on the Conduct of Committees of Inquiry', held at the Royal College of Psychiatrists, 17 Belgrave Square, London, on 9 June 1976

K. Rawnsley, 'The Responsibilities of Consultants in Psychiatry within the National Health Service', *Bulletin of the Royal College of Psychiatrists*, 8: 7 (July 1984)

RCPsych, 'Notes on the Meeting of the Working Party on the Conduct of Committees of Inquiry', held at the Royal College of Psychiatrists, 17 Belgrave Square, London, on 9 June 1976

RCPsych, 'Notes on the Meeting of the Working Party on the Conduct of Committees of Inquiry', held at the Royal College of Psychiatrists, 17 Belgrave Square, London, on 9 June 1976